

F



JAY R. SMITH MFG. CO.
 DIVISION OF SMITH INDUSTRIES, INC.
 POST OFFICE BOX 3237
 MONTGOMERY, ALABAMA 36109-0237 (USA)
 TEL: 334-277-8520 FAX: 334-272-7396 www.jrsmith.com



MEMBER OF:

LOCATION

DRAWING NUMBER
S1748

SIZE
A

SCALE:
NONE

DATE:
5-24-85

APPROVED BY:
TD

CHECKED BY:
TD

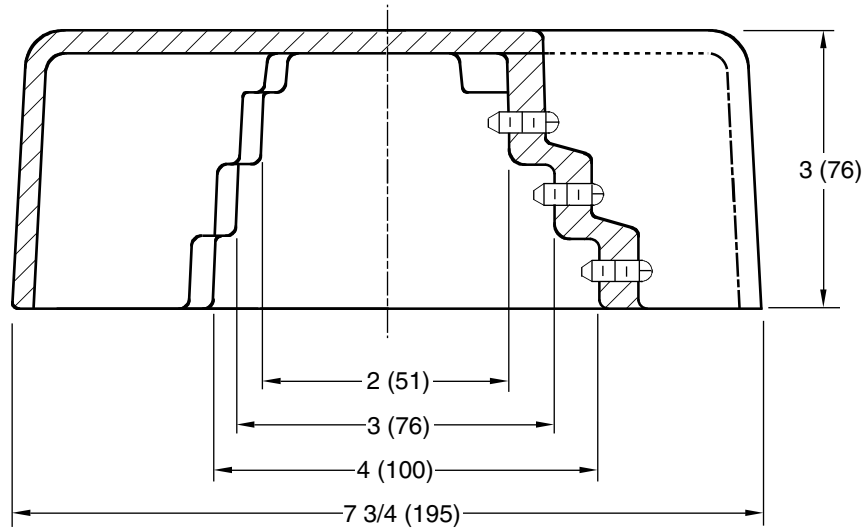
DRAWN BY:
VGD

WE CAN ASSUME NO RESPONSIBILITY FOR USE OF SUPERSEDED OR VOID DATA

ROOF ACCESSORY

VENT CAP VANDAL PROOF HOODED TYPE COUNTER FLASHING

FUNCTION: Recommended for all plumbing vents which terminate above the roof level. Unique vandal proof design eliminates the possibility of sticks or other materials being either carelessly or maliciously placed in the vent openings, thus causing stoppage of the drainage system.



NOTE: Dimensions shown in parentheses are in millimeters.

(Pipe Sizes) = 02(50), 03(75) or 04(100)

Fig. 1748... VENT CAP

REGULARLY FURNISHED:
 Duco Cast Iron Dome Secured with Recessed Allen Socket Set Screws.

OPTIONAL MATERIALS:
 Galvanized Cast Iron -G

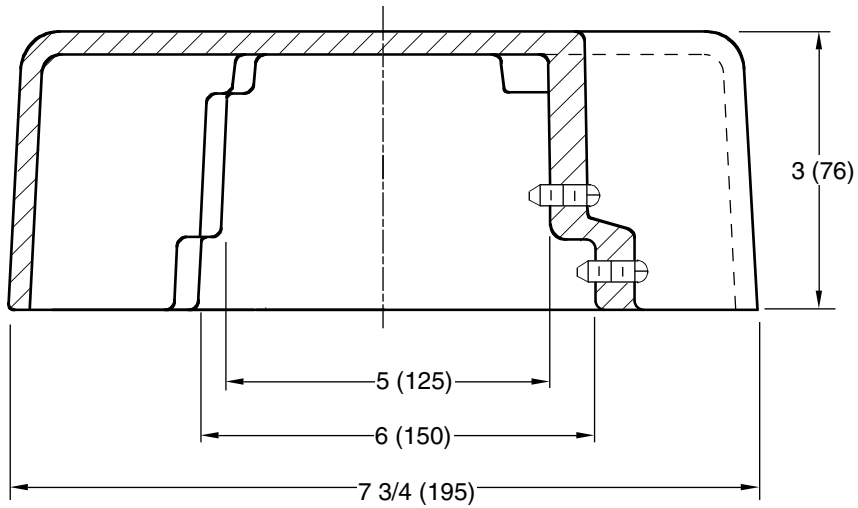
1748

FIGURE NUMBER	F	03/01/02	Deleted 1 1/2" optional pipe size Revised Millimeters	JJ	BS	WEIGHT POUNDS	VOLUME CUBIC FEET	FIGURE NUMBER 1748
	REV.	DATE		BY				

ROOF ACCESSORY

VENT CAP VANDAL PROOF HOODED TYPE COUNTER FLASHING

FUNCTION: Recommended for all plumbing vents which terminate above the roof level. Unique vandal proof design eliminates the possibility of sticks or other materials being either carelessly or maliciously placed in the vent openings, thus causing stoppage of the drainage system.



NOTE: Dimensions shown in parentheses are in millimeters.

(Pipe Size) = 05 (125) or 06 (150)

Fig. 1748. . . VENT CAP

REGULARLY FURNISHED:
 Duco Cast Iron Dome Secured with Recessed Allen Socket Set Screws.

OPTIONAL MATERIALS:
 Galvanized Cast Iron -G

DRAWING NUMBER S1748BS
 SIZE A
 SCALE: NONE
 DATE: 5-24-85
 APPROVED BY: TD
 CHECKED BY: TD
 DRAWN BY: VGD

WE CAN ASSUME NO RESPONSIBILITY FOR USE OF SUPERSEDED OR VOID DATA
 DIMENSIONS ARE SUBJECT TO MANUFACTURERS TOLERANCE AND CHANGE WITHOUT NOTICE

FIGURE NUMBER	1748BS	REV.	DATE	DESCRIPTION	BY	CKD. BY	WEIGHT POUNDS	VOLUME CUBIC FEET	FIGURE NUMBER
		C B A	6-26-96 7-1-94 10-91	Revised Submittal Update Revised drawing	EMB EMB CMB	BS SB			1748BS