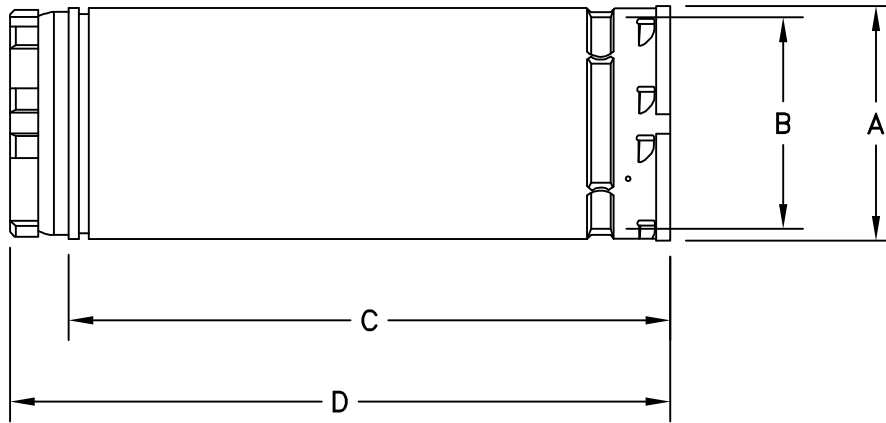


• MATERIAL:

OUTER – MIN. 0.018 THICK, GALVANIZED STEEL
 INNER – 0.012 THICK ALUMINUM ALLOY



PART NO.	A O.D.	B I.D.	ASSEMBLED LENGTH C					
14R	15"	14"	11"	17"	23"	35"	N/A	N/A
16R	17"	16"	11"	17"	23"	35"	N/A	N/A
18R	19"	18"	11"	17"	23"	35"	N/A	N/A
20R	21"	20"	11"	17"	23"	35"	N/A	N/A
22R	23"	22"	11"	17"	23"	35"	N/A	N/A
24R	25"	24"	11"	17"	23"	35"	N/A	N/A
26R	27"	26"	11"	17"	23"	35"	N/A	N/A
28R	29"	28"	11"	17"	23"	35"	N/A	N/A
30R	31"	30"	11"	17"	23"	35"	N/A	N/A
LISTED LENGTH D			12"	18"	24"	36"	48"	60"

JOB NAME: _____	SUBMITTED BY: _____	DATE: 10/27/09	SD-3101
LOCATION: _____		Type B Gas Vent Round Pipe MODEL "R" 14" – 30" Diameter	
ARCHITECT: _____			
ENGINEER: _____			
CONTRACTOR: _____			