

J

SMITH® JAY R. SMITH MFG. CO.®
 MEMBER OF MORRIS GROUP INTERNATIONAL
 POST OFFICE BOX 3237
 MONTGOMERY, ALABAMA 36109-0237 (USA)
 TEL: 334-277-8520 FAX: 334-272-7396 www.jrsmith.com



MEMBER OF:

LOCATION

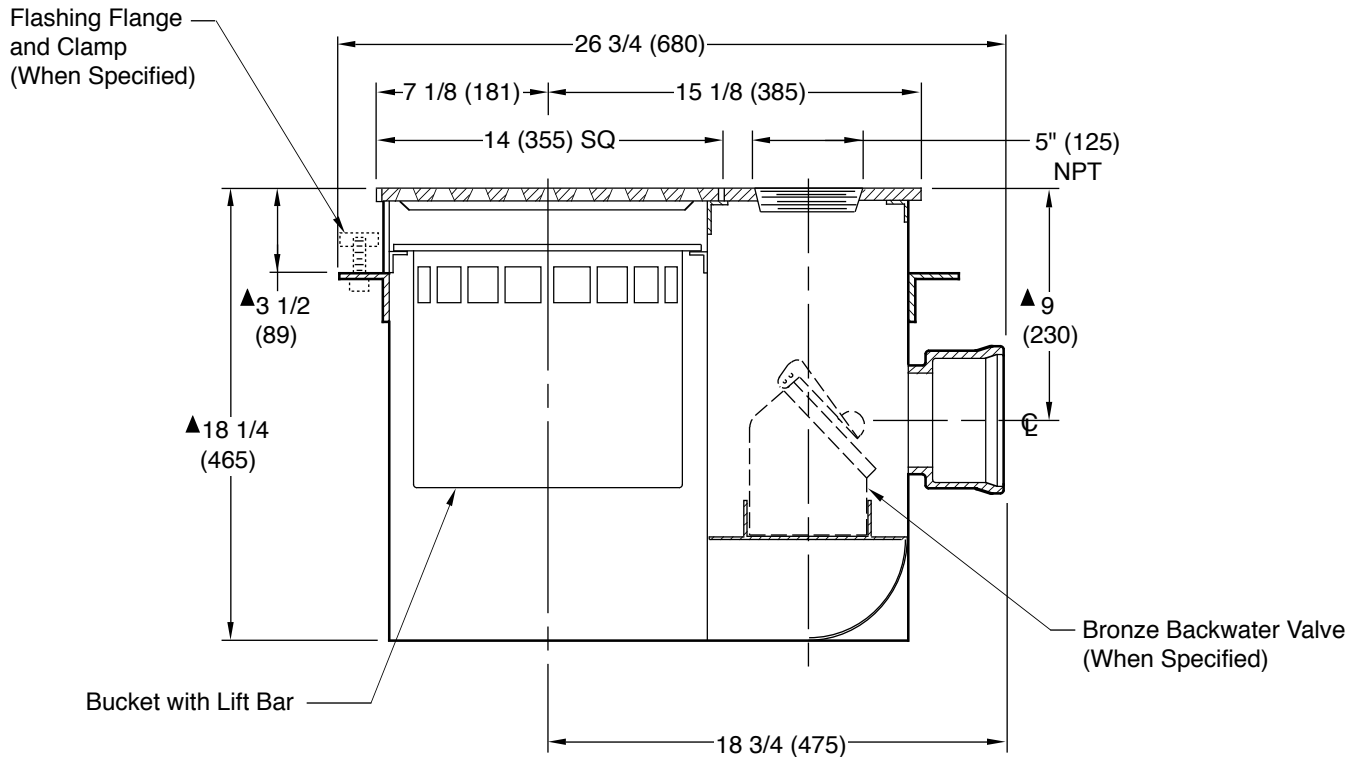
GARAGE AND INDUSTRIAL FLOOR DRAINS

EXTRA LARGE BUCKET DRAIN

Load Rating: Heavy Duty having a Safe Live (Static) Load between 5,000 lbs. (2,250 kg) and 7,499 lbs (3,375 kg) per ASME A112.6.3 Floor Drain Standard. For the specific Safe Live Load rating of any grate, contact the Smith representative or factory direct.

Free Area
 63 SQ IN
 (406) SQ CM

Flashing Flange and Clamp
 (When Specified)



A (Pipe Size) = 03(75) or 04(100)

Fig. 2650C HUB OUTLET

▲add 3/16"(5) when bronze top is specified.

NOTE: Dimensions shown in parentheses are in millimeters.

REGULARLY FURNISHED:

Galvanized Coated Fabricated Steel Body with H.D. Ductile Iron Grate, Suspended Bucket and Bronze Cleanout Plug.

VARIATIONS:

- Backwater Valve -V
- Anchor Flange -F
- Flashing Flange and Flashing Clamp -F-C
- Vandal Proof Top -U

OPTIONAL MATERIALS:

- Nickel Bronze Top -NB
- Polished Bronze Top -PB

DRAWING NUMBER
S2650

SIZE
A

SCALE:
NONE

DATE:
4-14-70

APPROVED BY:

B.H.

DRAWN BY:
R.K.

2650

FIGURE NUMBER

WE CAN ASSUME NO RESPONSIBILITY FOR USE OF SUPERSEDED OR VOID DATA

DIMENSIONS ARE SUBJECT TO MANUFACTURERS TOLERANCE AND CHANGE WITHOUT NOTICE

J	7-24-19	Added Load Rating	MW	JM	WEIGHT POUNDS	VOLUME CUBIC FEET	FIGURE NUMBER 2650
F	6-19-19	Removed Function	MW	JM			
I	9-10-18	Revised Variations	TBW	TWK			
F	6-19-95	Added Millimeters	EMB	BS			
REV.	DATE	DESCRIPTION	BY	CKD. BY			



WARNING: Cancer and Reproductive Harm - www.P65Warnings.ca.gov