

E

SMITH® JAY R. SMITH MFG. CO.®
 MEMBER OF MORRIS GROUP INTERNATIONAL
 POST OFFICE BOX 3237
 MONTGOMERY, ALABAMA 36109-0237 (USA)
 TEL: 334-277-8520 FAX: 334-272-7396 www.jrsmith.com



MEMBER OF:



LOCATION

DRAWING NUMBER
s1775

SIZE
A

SCALE:
NONE

DATE:
03-07-05

APPROVED BY:
JM

CHECKED BY:
JM

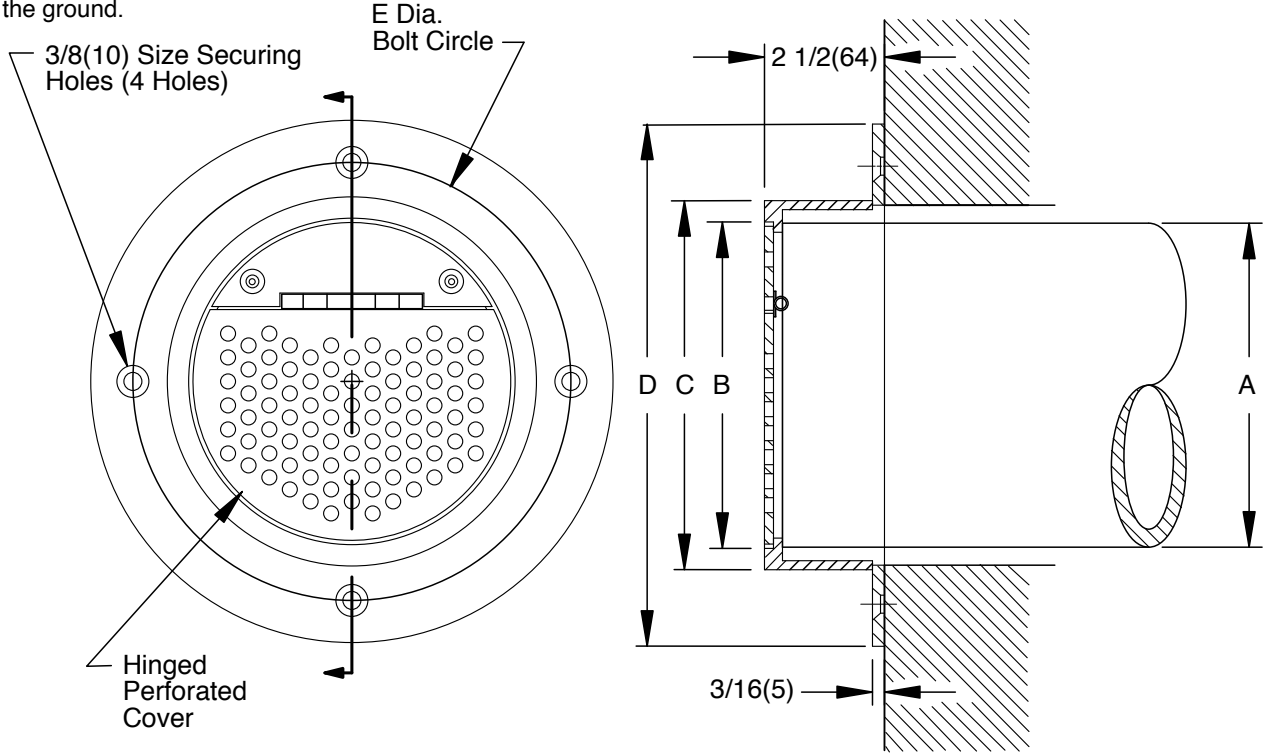
DRAWN BY:
JJ

WE CAN ASSUME NO RESPONSIBILITY FOR USE OF SUPERSEDED OR VOID DATA

DIMENSIONS ARE SUBJECT TO MANUFACTURERS TOLERANCE AND CHANGE WITHOUT NOTICE

SPECIAL PURPOSE DOWNSPOUT COVER

FUNCTION: Used as a downspout cover on a wall where an overflow roof drain concealed leader discharges rainwater to the ground.



FRONT VIEW

RIGHT SIDE SECTION VIEW

A (Pipe Size)	B DIA.	C DIA.	D DIA.	E DIA.
0150(38)	3 1/2(89)	4 1/2(115)	7 11/16(194)	6(150)
02(50)	3 1/2(89)	4 1/2(115)	7 11/16(194)	6(150)
03(75)	3 1/2(89)	4 1/2(115)	7 11/16(194)	6(150)
04(100)	4 9/16(116)	5 9/16(142)	8 3/4(220)	7 1/8(181)
05(125)	5 5/8(143)	6 5/8(168)	9 13/16(251)	8 1/4(210)
06(150)	6 11/16(169)	7 11/16(194)	10 7/8(278)	9(230)
08(200)	8 11/16(219)	9 11/16(249)	12 7/8(328)	11 1/4(285)
10(250)	10 13/16(276)	11 13/16(301)	15(380)	13 1/2(345)
12(305)	12 13/16(326)	13 13/16(351)	17(430)	15 1/2(395)
15(380)	16(405)	16 15/16(429)	20 1/8(513)	18 1/2(470)
16(405)	16(405)	16 15/16(429)	20 1/8(513)	18 1/2(470)
18(457)	18 9/16(471)	18 15/16(481)	22 1/4(565)	20 3/8(517)

Fig. 1775. DOWNSPOUT COVER

REGULARLY FURNISHED:
 Fabricated Type 304 Stainless Steel
 Downspout Cover with Hinged Perforated Cover.

VARIATIONS:
 Vandal Proof -U

OPTIONAL MATERIALS:
 Fabricated Polished Brass -PB
 Fabricated Chrome Plated Brass -CP

NOTE: Dimensions shown in parentheses are in millimeters.

1775

FIGURE NUMBER

REV.	DATE	DESCRIPTION	BY	CKD. BY	WEIGHT POUNDS	VOLUME CUBIC FEET	FIGURE NUMBER
	12/11/14 04/27/09 6-16-08 9-13-07	Added 16" & 18" Outlets Added Function Revised Cover Revised Table	TBW JJ TBW RN	TWK CL CL CL			1775