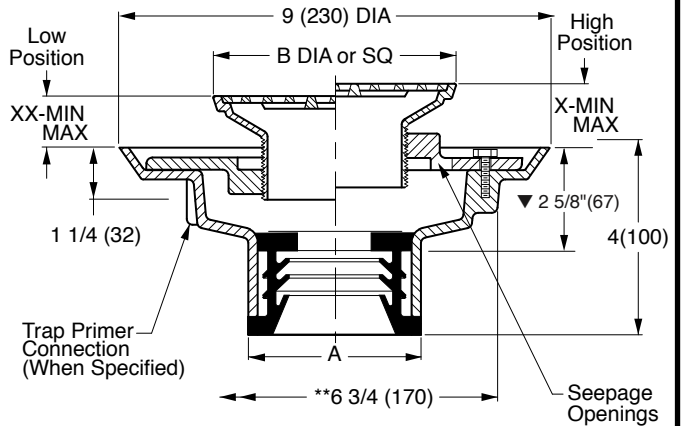
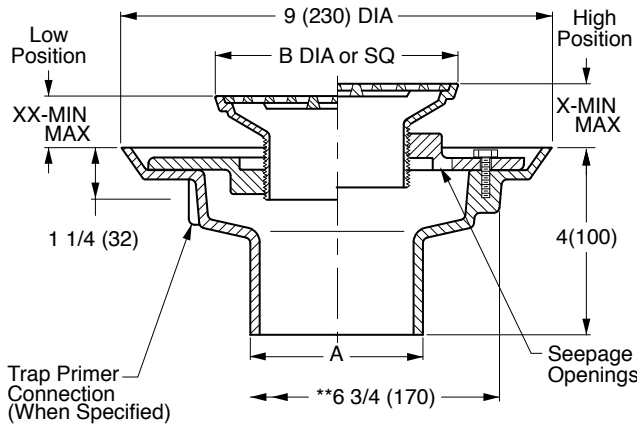


FLOOR OR SHOWER DRAINS WITH ADJUSTABLE STRAINER HEADS

FUNCTION: General service floor drain for use in showers, toilets, kitchens and other finished areas where foot traffic is expected. The round top strainer head is used for all types of poured finished floors. The square top is particularly adaptable to floors that are finished in material of square or straight line pattern. Reversible flashing collar permits adjustment of the strainer to meet finished floor level.



A (Pipe Size) = 02(50), 03(75), 04(100), 05(125) or 06(150)

NO-HUB OUTLET

- Fig. 2005Y.....(A) ROUND TOP
- Fig. 2005Y.....(B) SQUARE TOP

SPEEDI-SET OUTLET

- Fig. 2005L.....(A) ROUND TOP
- Fig. 2005L.....(B) SQUARE TOP

Outlet Size	Nickel Bronze Strainer Head
▲ 02(50)	05(125) DIA or SQ
▲ 03(75)	06(150) DIA or SQ
▲ 04(100)	08(205) DIA or SQ

Strainer Size B	*Collar In High Position X		*Collar In Low Position XX		Free Area SQ IN (SQ CM)	
	MIN	MAX	MIN	MAX	ROUND	SQUARE
05 (125)	1 1/4(32)	2 1/4(57)	3/4(19)	1 5/8(41)	7(45)	6.5(42)
06 (150)	1 1/4(32)	2 1/4(57)	3/4(19)	1 5/8(41)	9(58)	12.5(81)
07 (180)	1 1/4(32)	2 1/4(57)	7/8(22)	1 7/8(48)	14(90)	11(71)
08 (205)	1 1/2(38)	2 1/2(64)	1(25)	1 7/8(48)	17(110)	14(90)
*09 (230)	1 1/2(38)	2 3/8(60)	1(25)	1 7/8(48)	18(116)	16(103)
*10 (255)	1 1/2(38)	2 3/8(60)	1(25)	1 7/8(48)	23(48)	16(103)

- ▼ This dimension to internal stop of speedi-set gasket.
- Add 3/8"(10) to all min/max dimensions for round strainers.
- * Collar is reversible to obtain extreme high and low strainer positions.
- ** Not available for 5"(125) size strainer.
- ** MIN 6 3/4"(170) hole required for core drilled application.

REGULARLY FURNISHED:

Duco Cast Iron Body with Flashing Collar and Adjustable Strainer Head as Indicated by Suffix Letter Selected.

VARIATIONS:

- Flapper Type Backwater Valve -V
- Hinged Grate -H
- L Speedi-Set Service Weight 2(50), 3(75) & 4"(100) only
- LXH Speedi-Set Extra Heavy 2(50), 3(75) & 4"(100) only
- Sediment Bucket -B
- Trap Primer Connection -P050 1/2" (13) & -P075 3/4" (19)
- Vandal Proof Screws -U
- Wide Flanged Strainer (Specify Fig. DX2005)
- T Threaded Outlet
- Heelproof Grate -HP -AHP (Round) or -BHP (Square)
- Quad Close Trap Seal (Specify Fig. 2692)

OPTIONAL MATERIALS:

- Bronze Body -BB
- Chrome Plated Strainer -CP
- Galvanized Cast Iron Body -G
- Nickel Bronze Strainer -NB
- Polished Bronze Strainer -PB
- All Stainless Steel (Specify Fig. 9700)
- Stainless Steel Strainers -SS [Available in 05(125) & 06(150) sizes only]

NOTE: Dimensions shown in parentheses are in millimeters.

- ▲ Meets ASME Standard A112.6.3-2001 02(50), 03(75) or 04"(100) sizes only.

SEE PM0457 FOR OPTIONAL STRAINER HEADS.

DRAWING NUMBER: S2005
 SCALE: NONE
 DATE: 5-17-85
 APPROVED BY: TD
 CHECKED BY: TD
 DRAWN BY: PJ
 FIGURE NUMBER: 2005
 DIMENSIONS ARE SUBJECT TO MANUFACTURERS TOLERANCE AND CHANGE WITHOUT NOTICE
 WE CAN ASSUME NO RESPONSIBILITY FOR USE OF SUPERSEDED OR VOID DATA

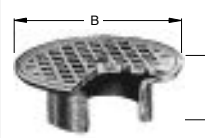
S	11-3-16	Revised Optional Materials Revised Variations Rev. Dwg., Var. Revised Variations	TBW	CL	WEIGHT POUNDS	VOLUME CUBIC FEET	FIGURE NUMBER 2005
R	6-10-15		TBW	CL			
Q	11-18-11		TBW	CR			
P	11-20-09		RN	BW			
REV.	DATE	DESCRIPTION	BY	CKD. BY			

H
 DRAWING NUMBER: **PM0457 SH 1 of 2**
 SIZE: **A**
 SCALE: **NONE**
 DATE: **5-17-85**
 APPROVED BY: **TD**
 CHECKED BY: **TD**
 DRAWN BY: **PJ**
 2010 SERIES OPTIONAL STRAINER HEADS

ASSUME NO RESPONSIBILITY OR USE OF SUPERSEDED OR VOID DATA

OPTIONAL STRAINER HEADS

ROUND STRAINER



MATERIALS:
 Chrome Plated -CP
 Polished Bronze -PB
 Nickel Bronze -NB
 Stainless Steel
 Strainers -SS [Available in 05(125) & 06(150) sizes only]

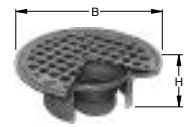
VARIATIONS:
 •Hinged Grate (Specify Suffix -AH)
 Sediment Bucket -B
 Vandal Proof Screws -U

B DIA	05 (125)	06 (150)	07 (180)	08 (205)	09 (230)	10 (255)
H	2 (51)	2 (51)	2 1/4 (57)	2 1/2 (64)	2 1/2 (64)	2 3/4 (70)
X MIN	1 1/4 (32)	1 1/4 (32)	1 1/4 (32)	1 1/2 (38)	1 1/2 (38)	1 1/2 (38)
X MAX	2 1/4 (57)	2 1/4 (57)	2 1/4 (57)	2 1/2 (64)	2 1/2 (64)	2 3/4 (70)

Specify Type, Size & Finish eg: A05NB
 *Not available for 05" (125) size

SUFFIX -A

FLAPPER TYPE BACKWATER VALVE



FUNCTION: Provides backwater protection at point where protection is needed.

MATERIALS:
 Chrome Plated -CP
 Polished Bronze -PB
 Nickel Bronze -NB

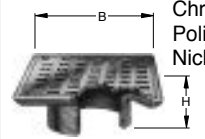
VARIATIONS:
 •Hinged Grate (Specify Suffix -AH)
 Vandal Proof Screws -U

B DIA	05 (125)	06 (150)	07 (180)	08 (205)
H	2 (51)	2 (51)	2 1/4 (57)	2 1/2 (64)
X MIN	1 1/4 (32)	1 1/4 (32)	1 1/4 (32)	1 1/2 (38)
X MAX	2 1/4 (57)	2 1/4 (57)	2 1/4 (57)	2 1/2 (64)

Specify Type, Size & Finish eg: AV05NB
 *Not available for 05" (125) size

SUFFIX -AV

SQUARE STRAINER



MATERIALS:
 Chrome Plated -CP
 Polished Bronze -PB
 Nickel Bronze -NB

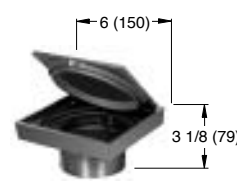
VARIATIONS:
 Flapper Type Backwater Valve (Specify Suffix -BV) 05 (125), 06 (150), 07 (180) or 08" (205) sizes only
 *Hinged Grate (Specify Suffix -BH)
 Sediment Bucket -B
 Vandal Proof Screws -U

B DIA	05 (125)	06 (150)	07 (180)	08 (205)	09 (230)	10 (255)
H	2 (51)	2 (51)	2 1/4 (57)	2 1/2 (64)	2 1/4 (57)	2 1/4 (57)
X MIN	1 1/4 (32)	1 1/4 (32)	1 1/4 (32)	1 1/2 (38)	1 1/2 (38)	1 1/2 (38)
X MAX	2 1/4 (57)	2 1/4 (57)	2 1/4 (57)	2 1/2 (64)	2 1/4 (57)	2 3/8 (60)

Specify Type, Size & Finish eg: B05NB
 *Not available for 05" (125) size

SUFFIX -B

STRAINER HEAD w/SQUARE HINGED COVER



MATERIALS:
 Chrome Plated -CP
 Polished Bronze -PB
 Nickel Bronze -NB

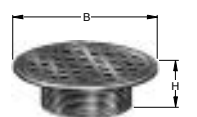
VARIATIONS:
 Gasketed Water Tight Cover -GC
 Secured Cover -SC
 Secondary Strainer Grate-SG

Specify Type, Size & Finish eg: BSNB

SUFFIX -BS

REINFORCED ROUND STRAINER

FUNCTION: Used in finished floors where light wheeled loads are anticipated.



MATERIALS:
 Chrome Plated -CP
 Polished Bronze -PB
 Nickel Bronze -NB

VARIATIONS:
 Flapper Type Backwater Valve (Specify Suffix -CV)
 Sediment Bucket -B
 Vandal Proof Screws -U

B DIA	05 (125)	06 (150)	08 (205)	10 (255)
H	2 (51)	2 (51)	2 1/2 (64)	2 3/4 (70)
MIN	1 1/4 (32)	1 1/4 (32)	1 1/2 (38)	1 7/8 (48)
MAX	2 1/4 (57)	2 1/4 (57)	2 1/2 (64)	2 3/4 (70)

Specify Type, Size & Finish eg: C06NB

SUFFIX -C

REINFORCED TRACTOR STRAINER

FUNCTION: Used in finished floors where medium weight wheeled loads are anticipated and loose set non-tilt tractor grate is desired.



MATERIALS:
 Cast Iron -CI
 Chrome Plated -CP
 Polished Bronze -PB
 Nickel Bronze -NB

VARIATIONS:
 Flapper Type Backwater Valve (Specify Suffix -DV or -EV)
 Sediment Bucket -B
 Vandal Proof Screws -U

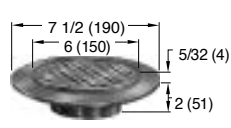
SUFFIX	B DIA	H	X	
			MIN	MAX
-D	07 (180)	3 1/4 (83)	2 5/8 (67)	3 1/2 (89)
-E	09 (230)	3 1/2 (89)	2 3/4 (70)	3 1/2 (89)

Specify Type, Size & Finish eg: D09PB
 E09PB

SUFFIX -D-E

TILE FLANGE

FUNCTION: Provides integral flange set 5/32" (4) below rim to receive floor covering. Flange may have option of tapped holes for securing pan and gasket.



MATERIALS:
 Chrome Plated -CP
 Polished Bronze -PB
 Nickel Bronze -NB

VARIATIONS:
 Flapper Type Backwater Valve (Specify Suffix -FV)
 Holes in Flange -SH
 Sediment Bucket -B
 Vandal Proof Screws -U

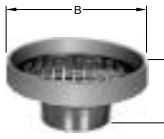
	X
MIN	MAX
1 1/4 (32)	2 1/8 (54)

Specify Type, Size & Finish eg: F06NB

SUFFIX -F

ADJUSTABLE STRAINER HEAD

FUNCTION: Used in a non-traffic area when a funnel type strainer head is required and space does not allow use of the 3500 series funnel. The extended rim allows use as an anti-flood and anti-splash drip pan.



VARIATIONS:
 Flapper Type Backwater Valve (Specify Suffix -F37V or F38V)

MATERIALS:
 Cast Iron -CI
 Chrome Plated -CP
 Galvanized Cast Iron -G
 Polished Bronze -PB
 Nickel Bronze -NB

SUFFIX	-F37	-F38
B DIA	07 (180)	09 (230)
H	3 1/4 (83)	3 1/2 (89)
X MIN	2 5/8 (67)	2 3/4 (70)
X MAX	3 1/2 (89)	3 1/2 (89)

Specify Type, Size & Finish eg: F37NB F38CP

SUFFIX -F37-F38

H G E F	11-3-16 10-4-01 8-24-99 6-11-99	Revised Suffix-A Revised Suffix-BS Revised Revised Tables	TBW RN TBW CMD	CL CL BS	FIGURE NUMBER 2010 SERIES OPTIONAL STRAINER HEADS 1 of 2
REV.	DATE	DESCRIPTION	BY	CKD. BY	

NOTE: Dimensions shown in parentheses are in millimeters.

OPTIONAL STRAINER HEADS

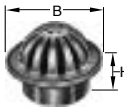

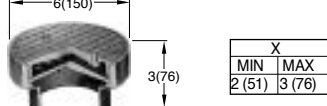
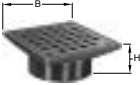

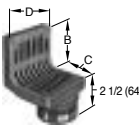
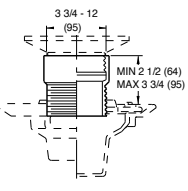
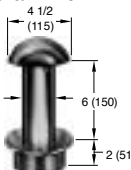
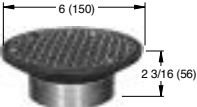
LOW DOME STRAINER	SOLID HINGED COVER	SPANNER WRENCH COVER																																																																													
<p>FUNCTION: Used in gutters and recessed areas where excessive debris build-up is expected. Dome insures drainage even when partly covered.</p> <p>MATERIALS: Chrome Plated -CP Polished Bronze -PB Nickel Bronze -NB</p> <p>VARIATIONS: Flapper Type Backwater Valve (Specify Suffix -GV) Sediment Bucket -B Vandal Proof Screws -U</p>  <table border="1"> <tr><td>B DIA</td><td>05 (125)</td><td>06 (150)</td><td>08 (205)</td></tr> <tr><td>H</td><td>2 (51)</td><td>2 (51)</td><td>2 1/2 (64)</td></tr> <tr><td>MIN</td><td>1 1/4 (32)</td><td>1 1/4 (32)</td><td>1 1/2 (38)</td></tr> <tr><td>MAX</td><td>2 1/4 (57)</td><td>2 1/4 (57)</td><td>2 1/2 (64)</td></tr> </table> <p>SUFFIX -G Specify Type, Size & Finish eg: G08PB</p>	B DIA	05 (125)	06 (150)	08 (205)	H	2 (51)	2 (51)	2 1/2 (64)	MIN	1 1/4 (32)	1 1/4 (32)	1 1/2 (38)	MAX	2 1/4 (57)	2 1/4 (57)	2 1/2 (64)	<p>FUNCTION: Used in areas where intermittent drain use is required. Solid cover prevents intrusion of chips, saw-dust, etc., which are swept up before cover is opened for washdown. The secondary strainer prevents debris from entering the waste line.</p> <p>MATERIALS: Cast Iron -CI Chrome Plated -CP Polished Bronze -PB Nickel Bronze -NB</p> <p>VARIATIONS: Flapper Type Backwater Valve (Specify Suffix -GV) Vandal Proof Screws -U</p>  <table border="1"> <tr><td>B DIA</td><td>05 (125)</td><td>06 (150)</td><td>07 (180)</td><td>08 (205)</td></tr> <tr><td>H</td><td>2 (51)</td><td>2 (51)</td><td>2 1/4 (57)</td><td>2 1/2 (64)</td></tr> <tr><td>X MIN</td><td>1 1/4 (32)</td><td>1 1/4 (32)</td><td>1 1/4 (32)</td><td>1 1/2 (38)</td></tr> <tr><td>X MAX</td><td>2 1/4 (57)</td><td>2 1/4 (57)</td><td>2 1/4 (57)</td><td>2 1/2 (64)</td></tr> </table> <p>SUFFIX -H Specify Type, Size & Finish eg: H05CP</p>	B DIA	05 (125)	06 (150)	07 (180)	08 (205)	H	2 (51)	2 (51)	2 1/4 (57)	2 1/2 (64)	X MIN	1 1/4 (32)	1 1/4 (32)	1 1/4 (32)	1 1/2 (38)	X MAX	2 1/4 (57)	2 1/4 (57)	2 1/4 (57)	2 1/2 (64)	<p>FUNCTION: Solid gas tight, vandal proof, threaded cover for areas where intermittent drain use is required.</p> <p>MATERIALS: Chrome Plated -CP Polished Bronze -PB Nickel Bronze -NB</p> <p>VARIATIONS: Flapper Type Backwater Valve (Specify Suffix -JV) Sediment Bucket -B</p>  <table border="1"> <tr><td>X</td><td>MIN</td><td>MAX</td></tr> <tr><td></td><td>2 (51)</td><td>3 (76)</td></tr> </table> <p>SUFFIX -J Specify Type, Size & Finish eg: J06NB</p>	X	MIN	MAX		2 (51)	3 (76)																																			
B DIA	05 (125)	06 (150)	08 (205)																																																																												
H	2 (51)	2 (51)	2 1/2 (64)																																																																												
MIN	1 1/4 (32)	1 1/4 (32)	1 1/2 (38)																																																																												
MAX	2 1/4 (57)	2 1/4 (57)	2 1/2 (64)																																																																												
B DIA	05 (125)	06 (150)	07 (180)	08 (205)																																																																											
H	2 (51)	2 (51)	2 1/4 (57)	2 1/2 (64)																																																																											
X MIN	1 1/4 (32)	1 1/4 (32)	1 1/4 (32)	1 1/2 (38)																																																																											
X MAX	2 1/4 (57)	2 1/4 (57)	2 1/4 (57)	2 1/2 (64)																																																																											
X	MIN	MAX																																																																													
	2 (51)	3 (76)																																																																													
<p>REINFORCED SQUARE STRAINER</p> <p>FUNCTION: Used in finished floors where some light wheeled traffic is anticipated.</p> <p>MATERIALS: Chrome Plated -CP Polished Bronze -PB Nickel Bronze -NB</p> <p>VARIATIONS: Flapper Type Backwater Valve (Specify Suffix -KV) Sediment Bucket -B Vandal Proof Screws -U</p>  <table border="1"> <tr><td>B SQ</td><td>05 (125)</td><td>06 (150)</td><td>07 (180)</td><td>08 (205)</td></tr> <tr><td>H</td><td>2 (51)</td><td>2 (51)</td><td>2 1/4 (57)</td><td>2 1/2 (64)</td></tr> <tr><td>X MIN</td><td>1 1/4 (32)</td><td>1 1/4 (32)</td><td>1 1/4 (32)</td><td>1 1/2 (38)</td></tr> <tr><td>X MAX</td><td>2 1/4 (57)</td><td>2 1/4 (57)</td><td>2 1/4 (57)</td><td>2 1/2 (64)</td></tr> </table> <p>SUFFIX -K Specify Type, Size & Finish eg: K07CP</p>	B SQ	05 (125)	06 (150)	07 (180)	08 (205)	H	2 (51)	2 (51)	2 1/4 (57)	2 1/2 (64)	X MIN	1 1/4 (32)	1 1/4 (32)	1 1/4 (32)	1 1/2 (38)	X MAX	2 1/4 (57)	2 1/4 (57)	2 1/4 (57)	2 1/2 (64)	<p>RECTANGULAR STRAINER</p> <p>FUNCTION: Used in finished floors where light wheeled loads and or heavy foot traffic are anticipated.</p> <p>MATERIALS: Chrome Plated -CP Polished Bronze -PB Nickel Bronze -NB</p> <p>VARIATIONS: Sediment Bucket -B Vandal Proof Screws -U</p>  <table border="1"> <tr><td>SUFFIX</td><td>L</td><td>M</td><td>N</td><td>P</td><td>R</td><td>T</td></tr> <tr><td>B x B'</td><td>4 1/2(115)x9(205)</td><td>4(100)x12(305)</td><td>5(125)x9(230)</td><td>5(125)x13(330)</td><td>6(150)x10(255)</td><td>5(125)x17(430)</td></tr> <tr><td>H</td><td>2 1/4 (57)</td><td>2 1/2 (64)</td><td>2 1/4 (57)</td><td>3 (76)</td><td>2 1/4 (57)</td><td>3 (76)</td></tr> <tr><td>X MIN</td><td>1 3/8 (35)</td><td>1 7/8 (49)</td><td>1 3/8 (35)</td><td>2 1/8 (54)</td><td>1 3/8 (35)</td><td>2 1/4 (57)</td></tr> <tr><td>X MAX</td><td>2 3/8 (60)</td><td>2 3/4 (70)</td><td>2 3/8 (60)</td><td>3 (76)</td><td>2 3/8 (60)</td><td>3 1/8 (79)</td></tr> </table> <p>SUFFIX -L-M-N-P-R-T Specify Type, Size & Finish eg: LNB</p>	SUFFIX	L	M	N	P	R	T	B x B'	4 1/2(115)x9(205)	4(100)x12(305)	5(125)x9(230)	5(125)x13(330)	6(150)x10(255)	5(125)x17(430)	H	2 1/4 (57)	2 1/2 (64)	2 1/4 (57)	3 (76)	2 1/4 (57)	3 (76)	X MIN	1 3/8 (35)	1 7/8 (49)	1 3/8 (35)	2 1/8 (54)	1 3/8 (35)	2 1/4 (57)	X MAX	2 3/8 (60)	2 3/4 (70)	2 3/8 (60)	3 (76)	2 3/8 (60)	3 1/8 (79)	<p>ANGLE STRAINER</p> <p>FUNCTION: Shower room drain set at wall and floor junction. Vertical grate openings prevent drain stoppage should flat surface become covered.</p> <p>MATERIALS: Cast Iron -CI Chrome Plated -CP Polished Bronze -PB Nickel Bronze -NB</p> <p>VARIATIONS: Vandal Proof Screws -U</p>  <table border="1"> <tr><td>SUFFIX</td><td>B</td><td>C</td><td>D</td><td>X</td></tr> <tr><td></td><td>MIN</td><td>MAX</td><td></td><td></td></tr> <tr><td>-V</td><td>3 1/2 (89)</td><td>3 1/2 (89)</td><td>4 1/2 (115)</td><td>1 5/8 (41)</td><td>2 5/8 (67)</td></tr> <tr><td>-W</td><td>6 3/4 (170)</td><td>6 3/4 (170)</td><td>6 1/2 (165)</td><td>1 5/8 (41)</td><td>2 5/8 (67)</td></tr> </table> <p>SUFFIX -V -W Specify Type, Size & Finish eg: VPB, WNB</p>	SUFFIX	B	C	D	X		MIN	MAX			-V	3 1/2 (89)	3 1/2 (89)	4 1/2 (115)	1 5/8 (41)	2 5/8 (67)	-W	6 3/4 (170)	6 3/4 (170)	6 1/2 (165)	1 5/8 (41)	2 5/8 (67)
B SQ	05 (125)	06 (150)	07 (180)	08 (205)																																																																											
H	2 (51)	2 (51)	2 1/4 (57)	2 1/2 (64)																																																																											
X MIN	1 1/4 (32)	1 1/4 (32)	1 1/4 (32)	1 1/2 (38)																																																																											
X MAX	2 1/4 (57)	2 1/4 (57)	2 1/4 (57)	2 1/2 (64)																																																																											
SUFFIX	L	M	N	P	R	T																																																																									
B x B'	4 1/2(115)x9(205)	4(100)x12(305)	5(125)x9(230)	5(125)x13(330)	6(150)x10(255)	5(125)x17(430)																																																																									
H	2 1/4 (57)	2 1/2 (64)	2 1/4 (57)	3 (76)	2 1/4 (57)	3 (76)																																																																									
X MIN	1 3/8 (35)	1 7/8 (49)	1 3/8 (35)	2 1/8 (54)	1 3/8 (35)	2 1/4 (57)																																																																									
X MAX	2 3/8 (60)	2 3/4 (70)	2 3/8 (60)	3 (76)	2 3/8 (60)	3 1/8 (79)																																																																									
SUFFIX	B	C	D	X																																																																											
	MIN	MAX																																																																													
-V	3 1/2 (89)	3 1/2 (89)	4 1/2 (115)	1 5/8 (41)	2 5/8 (67)																																																																										
-W	6 3/4 (170)	6 3/4 (170)	6 1/2 (165)	1 5/8 (41)	2 5/8 (67)																																																																										
<p>EXTENSION ADAPTOR</p> <p>FUNCTION: Used when a strainer head must be raised to accommodate deeper floor fill.</p> <p>REGULARLY FURNISHED: Duco Cast Iron -CI</p> <p>MATERIALS: Cast Bronze -CB Galvanized Cast Iron -G</p>  <p>NOTE: Extension can be stacked for increased maximum adjustment.</p> <p>SUFFIX -X</p>	<p>OVERFLOW WITH STANDPIPE</p> <p>FUNCTION: Used as overflow drain in decorative pools, fish ponds or similar areas. Dome prevents floating objects from entering drain line.</p> <p>MATERIALS: Chrome Plated -CP Nickel Bronze -NB Polished Bronze -PB</p> <p>VARIATIONS: Less Dome -LD Standpipe Height other than 6" (150) (Specify Height)</p>  <table border="1"> <tr><td>SUFFIX</td><td>A</td><td>X</td></tr> <tr><td></td><td>MIN</td><td>MAX</td></tr> <tr><td>-Y</td><td>2 (51)</td><td>3/4 (19)</td><td>2 1/8 (54)</td></tr> <tr><td>-Z</td><td>3 (76)</td><td>3/4 (19)</td><td>2 1/8 (54)</td></tr> </table> <p>SUFFIX -Y-Z Specify Type, Size & Finish eg: YCP, ZCP</p>	SUFFIX	A	X		MIN	MAX	-Y	2 (51)	3/4 (19)	2 1/8 (54)	-Z	3 (76)	3/4 (19)	2 1/8 (54)	<p>HEAVY DUTY ADJUSTABLE</p> <p>FUNCTION: Used in finished floors where light wheeled loads and or heavy foot traffic are anticipated.</p> <p>MATERIALS: Polished Bronze -PB Rough Bronze -RB Nickel Bronze -NB</p> <p>VARIATIONS: Flapper Type Backwater Valve (Specify Suffix -69V) Sediment Bucket -B Vandal Proof Screws -U</p>  <p>SUFFIX -69 eg: A06NB-69</p>																																																															
SUFFIX	A	X																																																																													
	MIN	MAX																																																																													
-Y	2 (51)	3/4 (19)	2 1/8 (54)																																																																												
-Z	3 (76)	3/4 (19)	2 1/8 (54)																																																																												

FIGURE NUMBER	J H G F E	1-17-12 8-24-99 6-11-99 1-22-99 11-4-97	Rev. Variations of Suffix -J Revised Revised Tables T Strainer was S Strainer Added Nickel Bronze	TBW TBW CMD TBW EMB	AM BS BS BS	FIGURE NUMBER 2010 SERIES OPTIONAL STRAINER HEADS 2 of 2
REV.	DATE	DESCRIPTION	BY	CKD. BY		

NOTE: Dimensions shown in parentheses are in millimeters.

DRAWING NUMBER: PM0457 SH 2 of 2
 SIZE: A
 SCALE: NONE
 DATE: 5-17-85
 APPROVED BY: TD
 CHECKED BY: TD
 DRAWN BY: PJ
 DIMENSIONS ARE SUBJECT TO MANUFACTURERS TOLERANCE AND CHANGE WITHOUT NOTICE
 ASSUME NO RESPONSIBILITY OR USE OF SUPERSEDED OR VOID DATA