

ADAPTORS AND REDUCERS

CAULK REDUCERS - HUB AND SPIGOT ADAPTORS

FUNCTION: Fig. 2641 allows a threaded connection to be adapted to a hub connection. Fig. 2643 is used with inside caulk bottom outlet drains to reduce the size of the connection. Fig. 2645 hub adaptor converts threaded to hub for caulking.

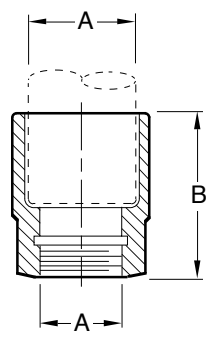


Fig. 2641T
HUB ADAPTOR
 Female Thread
 Specify Type & Size eg: 2641T0125

A SIZE	B
0125 (32)	5 (125)
0150 (38)	4 (100)
02 (51)	4 (100)
0250 (64)	4 3/4 (120)
03 (76)	4 1/2 (115)
04 (100)	4 3/4 (120)
05 (125)	5 1/2 (140)
06 (150)	5 1/2 (140)

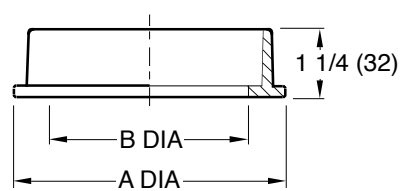


Fig. 2643
CAULK REDUCER
 Specify Type & Size eg: 2643-3 x 2

A x B DIA DIA
-3 (76) x 2 (51)
-4 (100) x 2 (51)
-4 (100) x 3 (76)
-5 (125) x 4 (100)
-6 (150) x 4 (100)
-6 (150) x 5 (125)
-8 (205) x 6 (150)

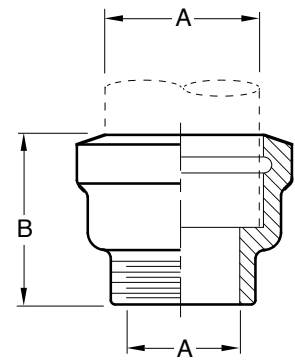


Fig. 2645
HUB ADAPTOR
 Male Thread
 Specify Type & Size eg: 2645T02

A SIZE	B
02(50),03(80),04(100)	4 1/4 (110)
05(125),06(150)	4 1/2 (115)
08(205)	4 1/2 (115)

NOTE: Dimensions shown in parentheses are in millimeters.

REGULARLY FURNISHED:
 Duco Cast Iron.

OPTIONAL MATERIALS:
 Galvanized Cast Iron -G

DRAWING NUMBER **S2641**
 SIZE **A**
 SCALE: **NONE**
 DATE: **5-17-85**
 APPROVED BY: **TD**
 CHECKED BY: **TD**
 DRAWN BY: **PJ**
2641, 2643, 2645
 DIMENSIONS ARE SUBJECT TO MANUFACTURERS TOLERANCE AND CHANGE WITHOUT NOTICE

WE CAN ASSUME NO RESPONSIBILITY FOR USE OF SUPERSEDED OR VOID DATA

REV.	DATE	DESCRIPTION	BY	CKD. BY	WEIGHT POUNDS	VOLUME CUBIC FEET	FIGURE NUMBER
	4-14-97 11-12-93	Added Millimeters Submittal Update	EMB EMB	BS BS			2641, 2643, 2645