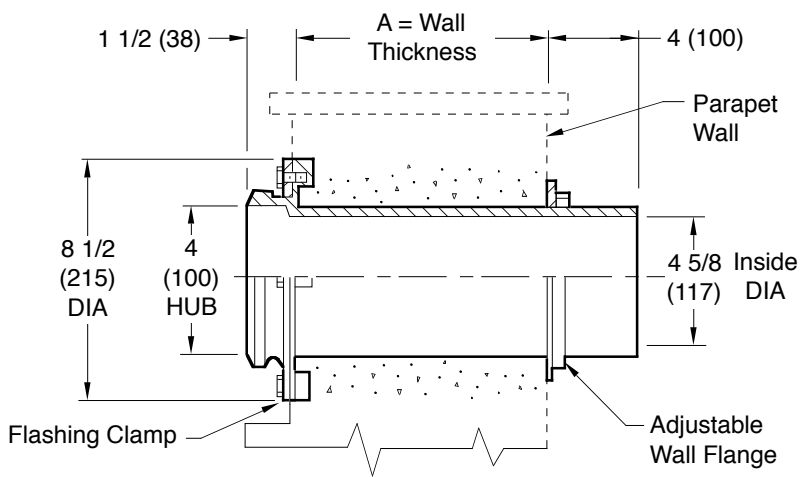


ROOF ACCESSORY

PARAPET SLEEVE

FUNCTION: Serves as scupper drain allowing drainage through parapet wall. Sleeve may be flashed at parapet wall and is held firmly in place by the adjustable wall flange.



	A Wall Thickness	
□	Fig. 1730-0850	8 1/2(215)
□	Fig. 1730-0950	9 1/2(240)
□	Fig. 1730-1350	13 1/2(345)
□	Fig. 1730-1750	17 1/2(445)
□	Fig. 1730-2250	22 1/2(572)

REGULARLY FURNISHED:
 Duco Cast Iron Body with Flashing
 Clamp and Adjustable Wall Flange.

OPTIONAL MATERIALS:
 Galvanized Cast Iron-G

NOTE: Dimensions shown in
 parentheses are in millimeters.

DRAWING NUMBER **S1730**
 SIZE **A**
 SCALE: **NONE**
 DATE: **5-24-85**
 APPROVED BY: **TD**
 CHECKED BY: **TD**
 DRAWN BY: **PL**
1730
 DIMENSIONS ARE SUBJECT TO MANUFACTURERS TOLERANCE AND CHANGE WITHOUT NOTICE

D C B A	8-31-17 3-18-14 4-7-97 6-15-93	Revised Table Added Table Added Millimeters Submittal Update	TBW TBW EMB EMB	CL CL BS BS	WEIGHT POUNDS	VOLUME CUBIC FEET	FIGURE NUMBER 1730
REV.	DATE	DESCRIPTION	BY	CKD. BY			