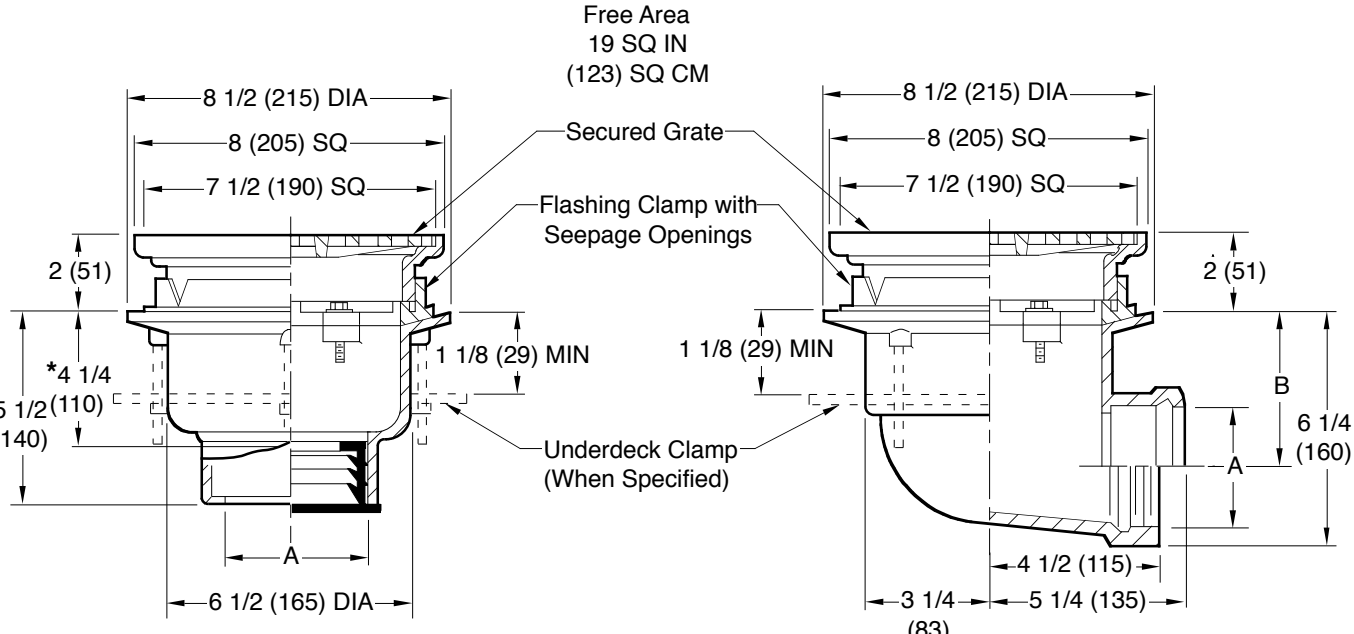


# PROMENADE DECK DRAINS

## SMALL - 8" (205) SQUARE

For use in small roof areas which are designed for promenade or recreational purposes. Square top design is compatible with "block" patterns. This drain should be used for small roof areas only and where light rainfall is expected.  
 Load Rating: Light Duty having a Safe Live (Static) Load less than 2,000 lbs. (900 kg) per ASME A112.6.3 Floor Drain Standard.  
 For the specific Safe Live Load rating of any grate, contact the Smith representative or factory direct.



- Fig. 1470C . . . . CAULK OUTLET
- Fig. 1470Y . . . . NO-HUB OUTLET

- Fig. 1480C . . . . CAULK OUTLET
- Fig. 1480T . . . . THREADED OUTLET

A (Pipe Size) = 02(50), 03(75) or 04(100)

\*This Dimension to Internal Stop of Speedi-Set Gasket.  
 ▲ Same for Caulk, NO-HUB and Speedi-Set 4 1/4(110) for Threaded.

recommended deck opening	
with suffix -R	9(230) DIA
less suffix -R	7 3/4(195) DIA

<b>A</b> SIZE	02(50)	03(75)	04(100)
<b>B</b>	4 1/2 (115)	4 (100)	3 1/2 (89)

**REGULARLY FURNISHED:**  
 Duco Cast Iron Body and Flashing Clamp with Seepage Openings and Secured Square Hole Light Duty Grate.

- VARIATIONS:**
- Expansion Joint (Specify Fig. 1710) (Fig. 1470 only)
  - Extension (Specify Height) -E
  - L Speedi-Set Service Weight (Fig. 1470 only)
  - LXH Speedi-Set Extra Heavy (Fig. 1470 only)
  - NO-HUB Adaptor (Specify Fig. 2646Y) (Fig. 1480 only)
  - Secondary Flashing Clamp -C2
  - Sump Receiver -R
  - Underdeck Clamp -C
  - Vandal Proof Grate -U
  - T Threaded Outlet
  - Heel Proof -HP

- OPTIONAL MATERIALS:**
- Ductile Iron Grate -M
  - Galvanized Cast Iron -G
  - Nickel Bronze Top -NB
  - Polished Bronze Top -PB

**NOTE:** Dimensions shown in parentheses are in millimeters.

**NOTE:** Floor drains or area drains, when used to drain exterior areas (subject to rainfall) should have an open area equal to twice the cross sectional area of the connecting pipe.

DRAWING NUMBER S1470  
 SIZE A  
 SCALE: NONE  
 DATE: 5-24-93  
 APPROVED BY: TD  
 CHECKED BY: TD  
 DRAWN BY: PJ  
**1470, 1480**  
 DIMENSIONS ARE SUBJECT TO MANUFACTURERS TOLERANCE AND CHANGE WITHOUT NOTICE  
 WE CAN ASSUME NO RESPONSIBILITY FOR USE OF SUPERSEDED OR VOID DATA

REV.	DATE	DESCRIPTION	BY	CKD. BY	WEIGHT POUNDS	VOLUME CUBIC FEET	FIGURE NUMBER
K	8-23-19	Added Load Rating	MW	JM			<b>1470, 1480</b>
J	8-12-14	Revised Drawing	TBW	CL			
H	6-25-08	Rev. Variations	TBW	TWK			
G	11-1-02	Rev. "V" Notch	RN				