

J

**SMITH® JAY R. SMITH MFG. CO.®**  
 MEMBER OF MORRIS GROUP INTERNATIONAL  
 POST OFFICE BOX 3237  
 MONTGOMERY, ALABAMA 36109-0237 (USA)  
 TEL: 334-277-8520 FAX: 334-272-7396 www.jrsmith.com

**CUSTOMER DRIVEN SINCE 1926**



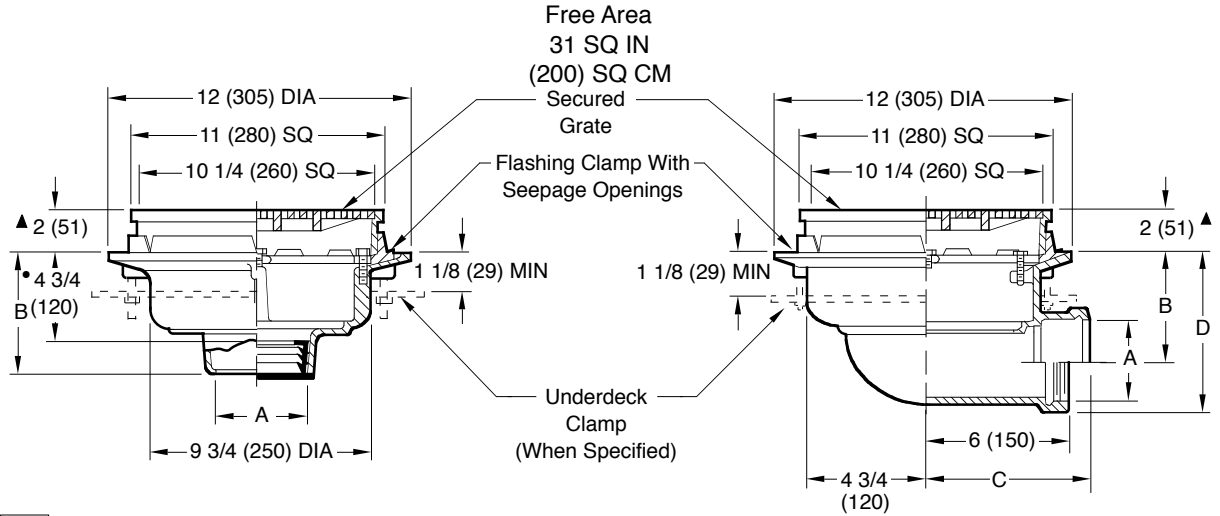
LOCATION

# PROMENADE DECK DRAINS

## MEDIUM - 11" (280) SQUARE

Medium size deck drain for use in flat roof decks. Body and accessories are compatible for installation in all types of roof construction. Square medium size top fits in with "block" patterns. This drain should only be used in areas of moderate flow requirements.

Load Rating: Light Duty having a Safe Live (Static) Load less than 2,000 lbs. (900 kg) per ASME A112.6.3 Floor Drain Standard. For the specific Safe Live Load rating of any grate, contact the Smith representative or factory direct.



- Fig. 1450C . . . . . CAULK OUTLET
- Fig. 1450Y . . . . . NO-HUB OUTLET

- Fig. 1460C . . . . . CAULK OUTLET
- Fig. 1460T . . . . . THREADED OUTLET

A SIZE	02 (50)	03 (75)	04 (100)	05 (125)	06 (150)
B	6 (150) for Caulk, NO-HUB and Speedi-Set 4 3/4 (120) for Threaded				

recommended deck opening	
with suffix -R	17 (430) DIA
less Suffix -R	14 (355) DIA

A SIZE	02 (50)	03 (75)	04 (100)
B	4 1/2 (115)	4 (100)	3 1/2 (89)
C	7 1/4 (185)	7 1/2 (190)	7 3/4 (195)
D	6 1/2 (165)	6 5/8 (168)	6 5/8 (168)

- This Dimension to Internal Stop of Speedi-Set Gasket.
- ▲ Add 3/16" (5) when bronze top is specified.

**NOTE:** Dimensions shown in parentheses are in millimeters.

**REGULARLY FURNISHED:**  
 Duco Cast Iron Body and Flashing Clamp with Seepage Openings and Secured Square Hole Light Duty Grate.

- VARIATIONS:**
- Expansion Joint (Specify Fig. 1710) (Fig. 1450 only)
  - Extension (Specify Height) -E
  - L Speedi-Set Service Weight 02(50), 03(75) & 04"(100) sizes only (Fig. 1450 only)
  - LXH Speedi-Set Extra Heavy 02(50), 03(75) & 04"(100) sizes only (Fig. 1450 only)
  - Underdeck Clamp -C
  - NO-HUB Adaptor (Specify Fig. 2646Y) (Fig. 1460 only)
  - Secondary Flashing Clamp -C2
  - Sump Receiver -R
  - Vandal Proof Grate -U
  - T Threaded Outlet
  - Heel Proof Grate -HP

- OPTIONAL MATERIALS:**
- Ductile Iron Grate -M
  - Galvanized Cast Iron -G
  - Nickel Bronze Top -NB
  - Polished Bronze Top -PB

**NOTE:** Floor drains or area drains used to drain areas subject to rainfall should have an open area equal to twice the cross sectional area of the connecting pipe.

DRAWING NUMBER  
S1450

SIZE  
A

SCALE:  
NONE

DATE:  
5-24-85

APPROVED BY:  
TD

CHECKED BY:  
TD

DRAWN BY:  
PJ

FIGURE NUMBER  
**1450, 1460**

WE CAN ASSUME NO RESPONSIBILITY FOR USE OF SUPERSEDED OR VOID DATA

DIMENSIONS ARE SUBJECT TO MANUFACTURERS TOLERANCE AND CHANGE WITHOUT NOTICE

K	8-22-19	Added Load Rating Revised Variations Revised Drawing Rev. Opt. Mat. Rev. Opt. Mat.	MW	JM
J	12-7-18		TBW	CL
H	8-11-14		TBW	CL
G	2-2-01		RN	BS
F	5-26-99		CMD	
REV.	DATE	DESCRIPTION	BY	CKD. BY

WEIGHT POUNDS	VOLUME CUBIC FEET
------------------	----------------------

**FIGURE NUMBER**  
**1450, 1460**