

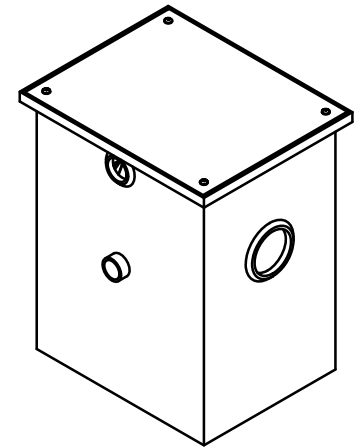
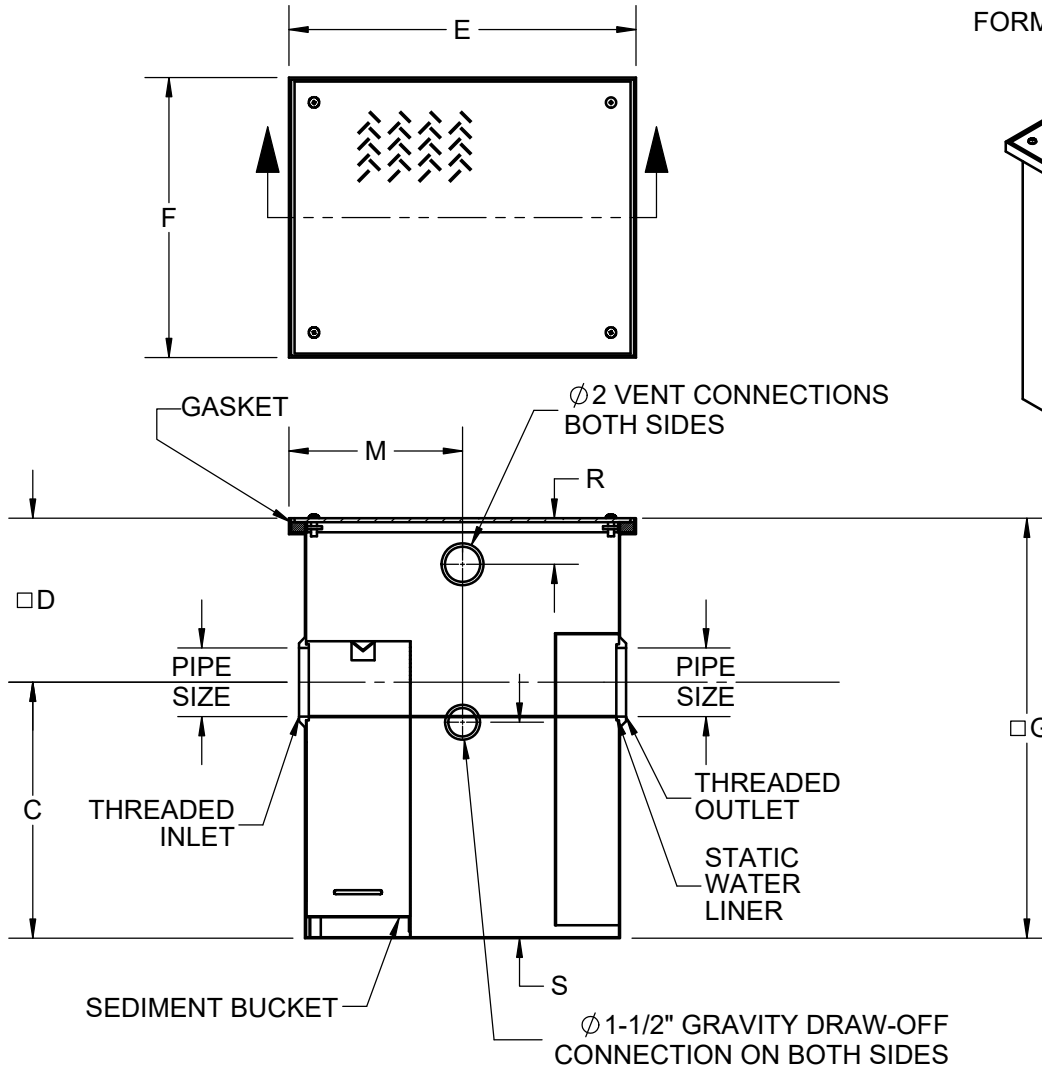
SPECIFICATION:

JOSAM 60500B-EXT SERIES EPOXY COATED FABRICATED STEEL OIL SEPARATOR, THREADED CONNECTIONS, DEEP ROUGHING, INTERNAL EXTENSION, INTERNAL TRAP, SEDIMENT BUCKET, TWO-VENT CONNECTIONS ON EACH SIDE, GASKETED NON-SKID COVER AND FLOW-CONTROL FITTING.

**OIL SEPARATOR
DRAW-OFF, GRAVITY TYPE**

SERIES **60500B-EXT**

FORMERLY 60520A SERIES



X	-EXT	EXTENSION, 6" STANDARD (SPECIFY EXT. HEIGHT)
	-EST	EXTRA STORAGE TANK
	-60	ANCHOR FLANGE (4" DOWN FROM TOP)
	-61	FLANGE AND CLAMP DEVICE (4" DOWN FROM TOP)
	-HD	HEAVY-DUTY COVER

FOR CUSTOM EXTENSION HEIGHT:
SPECIFY "D" DIMENSION= _____ IN.
NEW "G" DIMENSION= _____ IN.
("C" + "D")

	TYPE	FLOW RATE (GPM)	PIPE SIZE	C	□ D	E	F	□ G	M	R	S
	60503B	10	2"	10 1/2"	10 1/8"	15 -1/4"	12 3/4"	20 5/8"	7 1/2"	2 3/4"	8 1/2"
	60504B	15	2"	13"	10"	18"	14 3/4"	23"	9"	2 3/4"	10 5/8"
	60505B	20	*3"	14 3/8"	10 3/8"	19 15/16"	16 3/8"	25"	10"	2 3/4"	12"
	60506B	25	*3"	16"	10"	21 11/16"	17 1/2"	26 1/4"	10 1/2"	2 3/4"	13 1/2"
	60507B	35	*3"	16 3/4"	10 7/8"	25 1/8"	19 1/4"	27 7/8"	12 1/2"	2 3/4"	14 1/4"
	60508B	50	*3"	18 1/2"	12 1/4"	28 1/2"	21 1/2"	19 1/4"	14 1/4"	2 3/4"	16"

□ DIMENSIONS BASED ON STANDARD 6" EXTENSION

* 3" SIZES NORMALLY FURNISHED WITH 4" x 3" REDUCING BUSHINGS

WARNING: Cancer and Reproductive Harm - www.P65Warnings.ca.gov

DATE OF LAST CHANGE: 06/15/18

DIMENSIONS ARE SUBJECT TO MANUFACTURERS TOLERANCES AND CHANGE WITHOUT NOTICE. WE CAN ASSUME NO RESPONSIBILITY FOR USE OF SUPERSEDED OR VOID DATA.



MICHIGAN CITY, INDIANA

NOTES