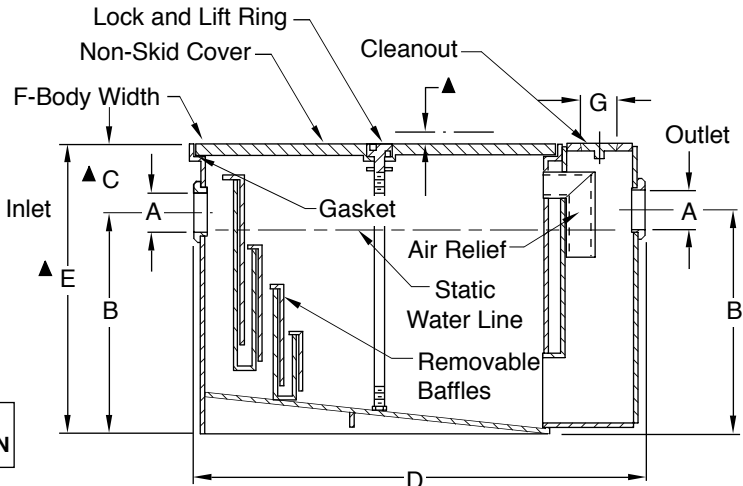


# GREASE INTERCEPTORS

**FUNCTION:** Used in kitchens, restaurants, institutions, and all types of food processing areas where waste water contains grease, fats and oil. Rate of flow into interceptor is controlled by a flow control fitting, thus enabling the interceptor to collect over 90% of the grease which flows into it. "Uni-lock" cover design permits fast cover removal for periodic cleaning. Interceptor may be set on floor, semi-recessed in floor or fully recessed with cover flush with finished floor. Fig. 8100 Series are extra low designs adaptable for use with dishwashers or low roughing sinks.



**SIDE VIEW  
FIG. 8010 SHOWN**



Figs. 8007 thru 8050, 8120 and 8135 carry the Plumbing and Drainage Institute Certification Seal Certifying conformance to Grease Interceptor Standard PDI-G101.

**NOTE:** It is the responsibility of the installer to check all parts (internal and external) to verify they are in their proper operating order and location.

**NOTE:** Whenever an interceptor is to be installed suspended in a floor slab with a cradle or independently, proper support is essential for safety and functional integrity of the installation.

**NOTE:** When tile or Terrazzo top is specified add 1 1/4"(32)

| FIG NO.         | GPM FLOW RATE | MIN. GREASE CAP. LBS. | INLET AND OUTLET SIZE A* | DIMENSIONS          |            |              |             |             |       | C.O. PLUG SIZE |
|-----------------|---------------|-----------------------|--------------------------|---------------------|------------|--------------|-------------|-------------|-------|----------------|
|                 |               |                       |                          | ROUGHING DIMENSIONS |            |              | BODY        |             |       |                |
|                 |               |                       |                          | B                   | C          | D            | HEIGHT E    | WIDTH F     | G     |                |
| 8004            | 4             | 8                     | 02(50)                   | 7 3/4(195)          | 3 1/4(83)  | 16 3/4(425)  | 11(280)     | 9(230)      | 2(51) |                |
| 8007            | 7             | 14                    | 02(50)                   | 8 1/2(215)          | 3 1/2(89)  | 19(485)      | 12(305)     | 10(255)     | 2(51) |                |
| 8010            | 10            | 20                    | 02(50)                   | 9 1/2(240)          | 3 3/4(95)  | 21 1/4(540)  | 13 1/4(335) | 11 1/2(290) | 2(51) |                |
| 8015            | 15            | 30                    | 02(50)                   | 12(305)             | 3 1/2(89)  | 25(635)      | 15 1/2(395) | 13 1/2(345) | 2(51) |                |
| 8020            | 20            | 40                    | 03(75)                   | 13(330)             | 4(100)     | 28 1/2(725)  | 17(430)     | 15 3/4(400) | 2(51) |                |
| 8025            | 25            | 50                    | 03(75)                   | 15 1/4(390)         | 4 1/2(115) | 30(760)      | 19 3/4(500) | 16 3/4(425) | 2(51) |                |
| 8035            | 35            | 70                    | 03(75)                   | 16(405)             | 5(125)     | 32 1/2(825)  | 21(535)     | 18 1/4(465) | 2(51) |                |
| 8050            | 50            | 100                   | 03(75)                   | 17 1/2(445)         | 6 3/4(170) | 35 1/2(900)  | 24 1/4(615) | 20 3/4(525) | 2(51) |                |
| <b>LOW TYPE</b> |               |                       |                          |                     |            |              |             |             |       |                |
| 8120            | 20            | 40                    | 03(75)                   | 7(180)              | 3 1/2(89)  | 38 1/2(980)  | 10 1/2(265) | 21 3/4(550) | 2(51) |                |
| 8135            | 35            | 70                    | 03(75)                   | 7(180)              | 4 3/4(120) | 49 1/2(1257) | 11 3/4(300) | 27 3/4(705) | 2(51) |                |
| 8150            | 50            | 100                   | 03(75)                   | 10(255)             | 6(150)     | 49 1/2(1257) | 16(405)     | 27 3/4(705) | 2(51) |                |

\*Available with larger inlet and outlet when specified.

**REGULARLY FURNISHED:**

Steel Interceptor with Gray Duco Coating Inside and Outside and Flow Control Fitting.

**VARIATIONS:**

- Cover Recessed for Terrazzo, Ceramic or Quarry Tile -QC
- Cover Recessed for Vinyl or Asphalt Tile -TC
- Lift Out Sediment Bucket -B
- NO-HUB Adaptor (2) Req'd (Specify Fig. 2646Y)
- Traffic Rated Cover -H20

**OPTIONAL MATERIALS:**

- Acid Resistant Coating Inside - ARI
- Acid Resistant Coating Outside - ARO
- Acid Resistant Coating Inside and Outside - ARI0
- Aluminum Cover -AC
- Coal Tar Epoxy Outside -CTO

**NOTE:** Dimensions shown in parentheses are in millimeters.

DRAWING NUMBER: S8000 SERIES  
 SIZE: A  
 SCALE: NONE  
 DATE: 4-24-85  
 APPROVED BY: SJM  
 CHECKED BY: JD  
 DRAWN BY: PJ  
 8000 SERIES  
 DIMENSIONS ARE SUBJECT TO MANUFACTURERS TOLERANCE AND CHANGE WITHOUT NOTICE  
 WE CAN ASSUME NO RESPONSIBILITY FOR USE OF SUPERSEDED OR VOID DATA  
 FIGURE NUMBER: REV. DATE DESCRIPTION BY CKD. BY WEIGHT POUNDS VOLUME CUBIC FEET FIGURE NUMBER: 8000 SERIES

|      |         |                    |     |         |               |                   |                    |
|------|---------|--------------------|-----|---------|---------------|-------------------|--------------------|
| W    | 3-22-19 | Revised Variations | MW  | CL      | WEIGHT POUNDS | VOLUME CUBIC FEET | FIGURE NUMBER      |
| V    | 5-1-18  | Revised PDI Note   | TBW | CL      |               |                   |                    |
| U    | 1-22-18 | Revised Callout    | TBW | CL      |               |                   |                    |
| T    | 1-19-18 | Revised Note       | TBW | CL      |               |                   |                    |
| REV. | DATE    | DESCRIPTION        | BY  | CKD. BY |               |                   | <b>8000 SERIES</b> |